



Joint Agricultural Weather Facility (JAWF)



The CPC JAWF Team

NOAA/Climate Prediction Center

What is JAWF?

The Joint Agricultural Weather Facility (JAWF) was created in 1978 as a collaborative effort between the National Oceanic and Atmospheric Administration (NOAA) and the US Department of Agriculture.

Mission: To keep the Nation's growers, exporters, USDA commodity analysts, as well as the Secretary of Agriculture and top staff informed of worldwide weather developments and their effects on crops and livestock.

The official JAWF webpage is: <http://www.usda.gov/oce/weather/>

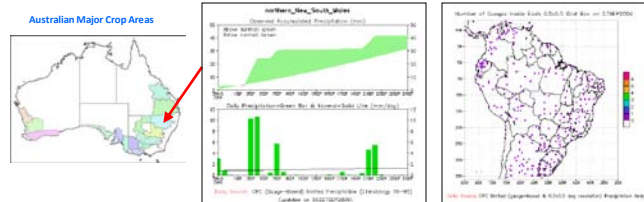
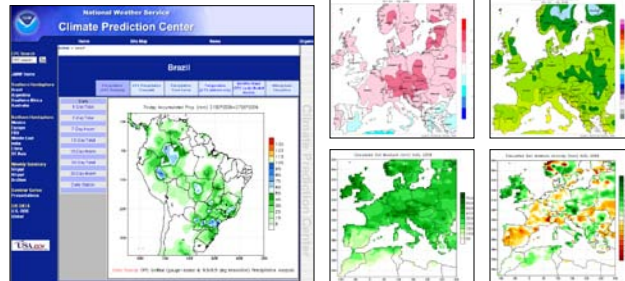
NWS and USDA Responsibilities

CPC provides climate and weather data to USDA agricultural meteorologists. Special products are produced for major crop areas worldwide to assist USDA in crop assessment.

USDA agricultural meteorologists use the NWS information along with agronomic data to arrive at the weather impacts on agricultural production both nationally and internationally. When integrated with economic analyses and information, these routine and special crop-weather assessments provide critical information to decision-makers formulating crop production forecasts, trade policy, and disaster relief.

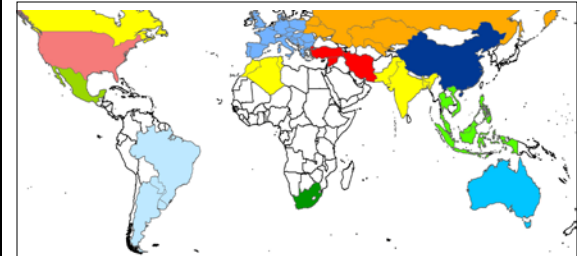
CPC JAWF Webpage

The new JAWF webpage features daily analyses and forecast products for the major crop areas over the Northern and Southern Hemispheres. Users can view precipitation, temperature, soil moisture, and atmospheric circulation maps for various time periods and select pre-defined areas to plot precipitation time series. Additional products are available on CPC's Global Monsoons webpage.



http://www.cpc.noaa.gov/products/JAWF_Monitoring

Major Crop Areas Monitored by JAWF

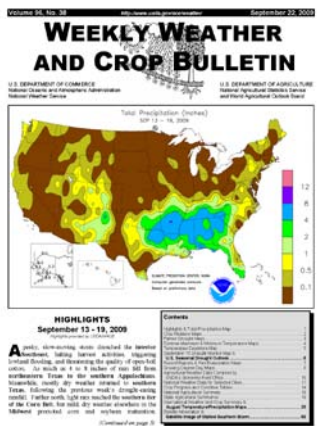


- **Southern Hemisphere:** Brazil, Paraguay, Uruguay, Argentina, South Africa and Australia.
- **Northern Hemisphere:** US, Canada, Mexico, northwest Africa, Europe, Former Soviet Union, Middle East, and Asia.

Plans for the Future

- Convert JAWF products to GIS.
- To organize a regular JAWF Seminar Series focused on USDA needs.
- Develop a weather and crop calendar for global areas indicating times of the year when precipitation and temperature typically have the greatest impact on agriculture.
- JAWF will collaborate with CPC's African Desk to form the CPC's International Desk.
- The International Desk will be the centerpiece of national and international climate services strategy.

Weekly Weather and Crop Bulletin



Weekly Summary of Weather and Climate over the Northern and the Southern Hemispheres

Northern Hemisphere: Weather & Climate over Major Crops Areas

Update prepared by Climate Prediction Center / NCEP 30 September 2009

For further information: http://www.cpc.noaa.gov/products/JAWF_Monitoring/

Outline

- Highlights
- ENSO Current Status
- MJO Current Status
- Monsoon Current Status
- Southern Hemisphere Circulation
- Rainfall & Temperature Patterns
- NCEP/GFS Model Forecast
- Forecast Verification

ENSO Current Status

General Summary: El Niño is present across the tropical Pacific Ocean.

Key Northern Hemisphere (NH) features in North America include average surface rainfall of the central and east-central regional parts.

Based on current observations and statistical information, the 2009-10 winter (DJF) is expected to be a wetter than average season for the central and eastern Pacific.

Northern Hemisphere Circulation

Omega Anomalies and Total Precipitation - Recent 7 days

Key features include circulation anomalies over the North Pacific and North Atlantic, and precipitation anomalies over the central and eastern Pacific.

The CPC JAWF Team

David Miskus: David.Miskus@noaa.gov (Team Lead)

Adam Allgood: Adam.Allgood@noaa.gov

Andrew Loconto: Andrew.Loconto@noaa.gov

Brad Pugh: Brad.Pugh@noaa.gov

Sarah Marquardt: Sarah.Marquardt@noaa.gov

Viviane Silva: Viviane.Silva@noaa.gov

For questions or comments regarding the CPC JAWF webpage please contact Viviane Silva or Sarah Marquardt.

http://www.cpc.noaa.gov/products/JAWF_Monitoring